

Welcome to Reception Class



KALEIDOSCOPE
Multi Academy Trust

Meet the teachers



**Mr Penny –
Headteacher**



**Mrs Byron –
EYFS Lead Teacher**



Mrs Bridge



Mrs Wilson

What happens in the morning?

When I arrive I will put my coat, jumper and hat on my peg.



I will then put my bookbag in the correct box.

I will complete an activity with my group until the bell rings.





Child initiated learning time

I can explore all areas of the Reception unit. Play supports my learning through first hand, practical experiences.



During the morning I will be able to have a snack and a drink of water or milk.





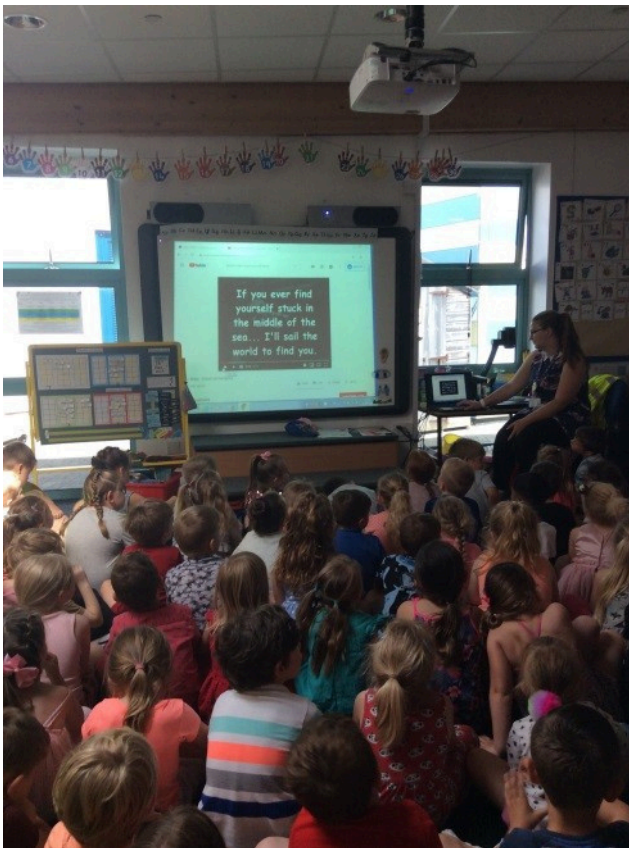
Tidy up time

**A bell will ring when it is
time to tidy up.**

**We all work together to
tidy away our things.**



Carpet time



**I will sit on the
carpet to get
ready for the next
part of the day.**





Outdoor Learning



There is a lot to explore outside.

If we are using the grass area we may need to put on our wellies.

We try to get outside come rain or shine at breaktimes and lunchtimes, apart from very extreme weather. Sometimes we get muddy and wet from splashing in puddles.

It's a good idea for us to have some spare things at school:

- A waterproof coat**
- Sunhat**
- Wellies**
- Waterproof trousers**
- Additional change of clothes**



Lunch time



We will go over to the hall for lunch in our classes. We queue nicely and we all sit at the table





Playground



After I have eaten my lunch I will go outside on the playground to play.

The play team will wear yellow jackets.

A bell will ring to signal the end of lunchtime.

We must follow the instructions to line up in the correct line.



Toilets



The toilets should only have one child in at a time. When I use the toilet I will pull the flush and wash my hands.

Ashcombe School Rules

The Ashcombe 'Bs'

Be ready

Be respectful

Be safe



PE – Physical Education



The school hall is where we will go for PE with our teachers.

We go to the hall for special events too.

PE helps me to move my body in different ways and gain more control.

On PE days I will wear my PE kit to school instead of my school uniform.



End of the day



At the end of the day I will need to make sure I have all my things to take home. I must remember my coat, book bag and lunch box if I had one. I will empty my home pocket of any work or creations I have made during my day.



My teacher will call me and I can go and find out who is collecting me at the end of my day





What I need to bring to school

Your school uniform includes:

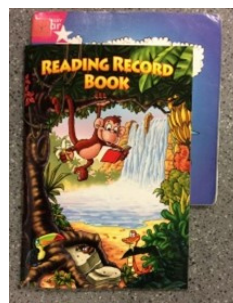
- School jumper or cardigan
- White polo top/shirt
- Black or grey trousers/shorts or skirts
- Summer dresses
- Black shoes



Water Bottles –
We have water bottles in school for you to use



Book Bag –
Please keep school books and reading record in the book bag



PE Kits – Worn to school on PE days.

- White T-shirt
- Shorts / Leggings
- Black or white trainers



Wellington Boots –
Please name these